

netra  
Galaxy

Nuahat, Phulnakhara Square, NH-16



Developer :

**ALISHAN REALCON PVT. LTD.**

Plot No-N4/185, IRC Village, Nayapali, Bhubaneswar, Odisha - 751015

Tel. : +91 9937005103, E-mail : netragalaxy@gmail.com

Web : www.netragalaxy.com

Powered by :



Architect :



**SAURASTRA DAS  
CONSULTANTS**  
300, Kharavel Nagar, Bhubaneswar  
Tel. : 0674 - 2392681

Design Consultant :



**Vogue Architect**  
INTERIOR + LANDSCAPING  
10, Jagannath Vihar, Benupur,  
Bhubaneswar. Tel. : 9937192265

Designed & Printed at :



IDCO Plot No. M-29, Near OTV,  
Chandaka Industrial Estate, Patia, Bhubaneswar  
Tel. : 94371 62825, E-mail : arttech.bbsr@gmail.com

Disclaimer : The sizes / Shapes / Positions of openings, ducts, balconies and landscape are subject to change. Room sizes indicated are structural sizes and actual sizes may vary due to finishes. Area mentioned are subject to change after finalization of services and structural design. The furniture shown in the illustration is only indicative.

All plans, specification, artistic rendering and images as shown in this brochure are only indicative and are subject to change as may be decided by the company or directed by any competent authority in the best interests of the development. Soft furnishing, furniture and gadgets do not form a part of the offering. This document is conceptual and not a legal offering by the Company and is to be used for general information only. Any interested party should verify all the information including designs, plans, specifications, facilities, features, payment schedules, terms of sales etc independently with the Company prior to concluding any decision for buying in any of the towers. The user of the Brochure confirms that he / she has not solely relied on this information for making any booking /purchase in any of the towers. Nothing on the brochure should be misconstrued as advertising, marketing, booking, selling or an offer for sale or invitation to purchase a unit in any project by the Company.

Nothing contained herein intends to constitute a legal offering on the Company's part. Information herein may contain technical inaccuracies or typographical errors. All images (other than actual images) are merely artistic conceptualization and should not be relied upon as definitive reference. Netra Galaxy is registered with the Odisha Real Estate Regulatory Authority vide Project Registration Number RP/07/2022/00795 dt. 20/10/2022



HAPPINESS REDEFINED





netra  
Galaxy

NETRA  
GALAXY

This is what you have been searching for  
Low Rise, Low Density





## OUTDOOR Amenities

Relax, Rejuvenate & Breathe

- Kid's Play Area
- Water Wall & Lilly Pool
- Open Amphitheatre
- Senior Citizen's Sitout
- Walking Track
- Lush green landscaping







## NETRA GALAXY - Iconic Paradise Living Apartments

Owing one's home has always seemed a mystical joy that's been hiding away, carefully tucked in the back of our minds. It's time to pluck that dream and bring it to life with Netra Galaxy.

Quality and style are the two vital parameters that distinguish Netra Galaxy from others. The construction of our sites is aesthetic, modern and one of a kind. All spacious apartments and homes are crafted especially for folks who want to realize their lifelong dream of owning a home.

**210 well ventilated 3, 3.5 & 4.5 BHK residential Apartments | S+5 Floors | 1380 sft onwards | 5 Blocks | Dedicated luxury Club House with Modern amenities | 12000 sft of central courtyard area | 60% open to sky area | 3.770 Acres of Land Parcel**

## ELITE Features

- Round the clock security
- 24\*7 water supply through submersible pump.
- 100% Power backup for common areas. Limited Power backup to 1 no of Lift of each block and club house and 500 watts of backup to each flat.
- 60% of open to sky area.
- 20% space for Green-belt & avenue plantation.
- 24\*7 security surveillance through CCTV.
- Dedicated parking space for physically challenged persons, ambulance and visitors.
- Intercom system.
- Sewerage Treatment Plant of 170 KLD capacity
- Rooftop Solar energy system
- Rain water harvesting System
- Fire fighting systems as per NBC norms.
- EV charging points.
- Car wash area.



## PROJECT Layout



## PROJECT Specification

### FOUNDATION

- RCC Framed Earthquake Resistant Structure with Vizag / Sail Steel & Cement of Ramco / Dalmia / Nuvoco (Emami) Brand / Equivalent Make.

### SUPER STRUCTURE

- RCC Structure of Column Beams, Lintel and Slabs with M20 Grade Concrete.

### WALLS

- All Brick work shall of AAC block / Fly ash with plastering both outside and inside 1:6 proportions.

### DOORS

- Door Frame (Choukath) – Sal wood.
- Main Door - TATA Prabesh with Handle lock of Godrej make.
- Internal Doors - 32 mm Factory made flush Doors with paint (Green/ Green panel) with Morteg lock of Godrej Make.

### WINDOWS

- UPVC (VEKA / LG) / Power coated aluminum sliding windows with MS. Grill and Bug Mesh.

### WINDOWS SILL

- Granite Stone cladding around the edge of windows.

### PAINTING

- Internal walls finished with wall putty (JK / ICI Dulux / Asian) & Acrylic emulsion paint of 2 coats (JK / ICI Dulux / Asian).
- External walls finished with weather coat paint of 2 coats (JK / ICI Dulux / Asian) over one coat of primer.

### FLOORING

- Drawing & Dining Room - 600 \* 1200 mm Vitrified Tiles of Johnson / Somany / Equivalent Make.
- Bedroom & Kitchen Room - 600 \* 600 mm Vitrified tiles of Johnson / Somany (GRD) with spacers.
- Toilets - Anti - skid ceramic floor tiles. Ceramic Wall tiles of 600 \* 300 mm upto heights of 2100 mm with highlighter one line.
- Balcony - Anti - skid ceramic floor tiles.

### KITCHEN

- Black Granite stone cooking platform with ceramic tiles with a dado up to 2.5ft height above the counter. Stainless steel kitchen sink with drain board.

### TOILETS

- Branded CP & Sanitary fixtures of Hindware / Parryware / Kohler / Equivalent Make and ISI mark.
- Provision for exhaust fan & geyser in all toilets.
- Wall mounted WCs in all toilets.

### BALCONY

- Decorative & safety M.S railing.

### STAIRCASE & CORRIDOR

- Staircase and Corridor with Granite and SS railing (202).

### ELECTRICAL

- Concealed wiring of RR / Finolex / Polycab / Anchor / Equivalent make with DB/ MCB of Havells make.
- Provision for AC, TV and telephone points.
- Modular electrical switches of Havells / Roma Anchor / Equivalent make.

### PARKING

- Parking area will fitted with VDF Flooring.

### LIFT

- 8 passengers automated lifts and Stretcher lifts of KONE / OTIS brand.





# TYPICAL Floor Plan



3 BHK Isometric View



FLAT NO.	FLAT TYPE	FLOOR	CARPET AREA (Sft.)	BALCONY AREA (Sft.)	SBA (Sft.)
101 to 112	3 BHK	FIRST	1113	95	1760
201 to 212	3 BHK	SECOND	1113	95	1760
301 to 312	3 BHK	THIRD	1113	95	1760
401 to 412	3 BHK	FOURTH	1113	95	1760
501 to 512	3 BHK	FIFTH	1113	95	1760

BLOCK - A



## TYPICAL Floor Plan



3 BHK Isometric View



FLAT NO.	FLAT TYPE	FLOOR	CARPET AREA (Sft.)	BALCONY AREA (Sft.)	SBA (Sft.)
101 to 112	3 BHK	FIRST	1130	95	1800
201 to 212	3 BHK	SECOND	1130	95	1800
301 to 312	3 BHK	THIRD	1130	95	1800
401 to 412	3 BHK	FOURTH	1130	95	1800
501 to 512	3 BHK	FIFTH	1130	95	1800

BLOCK - B









## TYPICAL Floor Plan



## 4.5 BHK Isometric View



## 3.5 BHK Isometric View



FLAT NO.	FLAT TYPE	FLOOR	CARPET AREA (Sft.)	BALCONY AREA (Sft.)	SBA (Sft.)
101 & 104	3 BHK	FIRST	1131	89	1790
102,103,106 & 107	4.5 BHK	FIRST	2161	296	3520
105 & 108	3.5 BHK	FIRST	1350	159	2200
201 & 204	3 BHK	SECOND	1131	89	1790
202,203,206 & 207	4.5 BHK	SECOND	2161	296	3520
205 & 208	3.5 BHK	SECOND	1350	159	2200
301 & 304	3 BHK	THIRD	1131	89	1790
302,303,306 & 307	4.5 BHK	THIRD	2161	296	3520
305 & 308	3.5 BHK	THIRD	1350	159	2200

FLAT NO.	FLAT TYPE	FLOOR	CARPET AREA (Sft.)	BALCONY AREA (Sft.)	SBA (Sft.)
401 & 404	3 BHK	FOURTH	1131	89	1790
402,403,406 & 407	4.5 BHK	FOURTH	2161	296	3520
405 & 408	3.5 BHK	FOURTH	1350	159	2200
501 & 504	3 BHK	FIFTH	1131	89	1790
502,503,506 & 507	4.5 BHK	FIFTH	2161	296	3520
505 & 508	3.5 BHK	FIFTH	1350	159	2200

BLOCK - E





# CLUB CALISTO

Blending Relaxation with Sophistication

## INDOOR Amenities

- Well decorated spacious lobby.
- Dedicated society office room.
- Cafe lounge and space for departmental & pharmaceutical store.
- Air conditioned Multipurpose Hall
- Swimming Pool with Kids pool.
- Pool deck & Changing room.
- Air conditioned State-of-the-art gymnasium with locker and changing room.
- Meditation & Yoga room.
- Toddlers Room.
- Reading & Library Room.
- Chess, Card & Carom Board Room.
- Table Tennis & Pool Table Room.
- Mini Movie Theater.
- Space for Fine Dine restaurant area with support Kitchen.



CLUB LOBBY



BANQUET



TODDLERS

SWIMMING POOL



LIBRARY



GYMNASIUM







YOGA



TABLE TENNIS

UNWIND IN TRUE STYLE  
Let the fun hour keep rolling each day !



SNOOKER

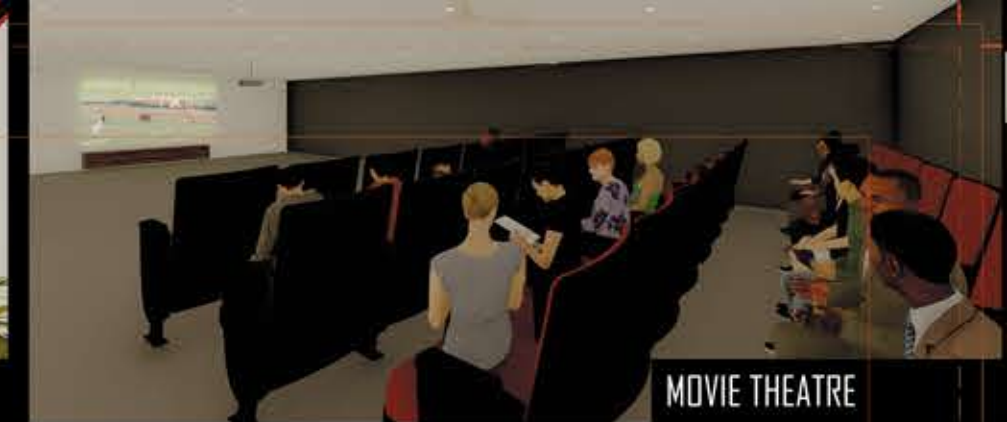
CLUB CALISTO is the perfect  
destination for you to unwind after a  
long day with your favourite people  
over fun games & conversations.



DINE-IN\*



RESTAURANT LOBBY\*



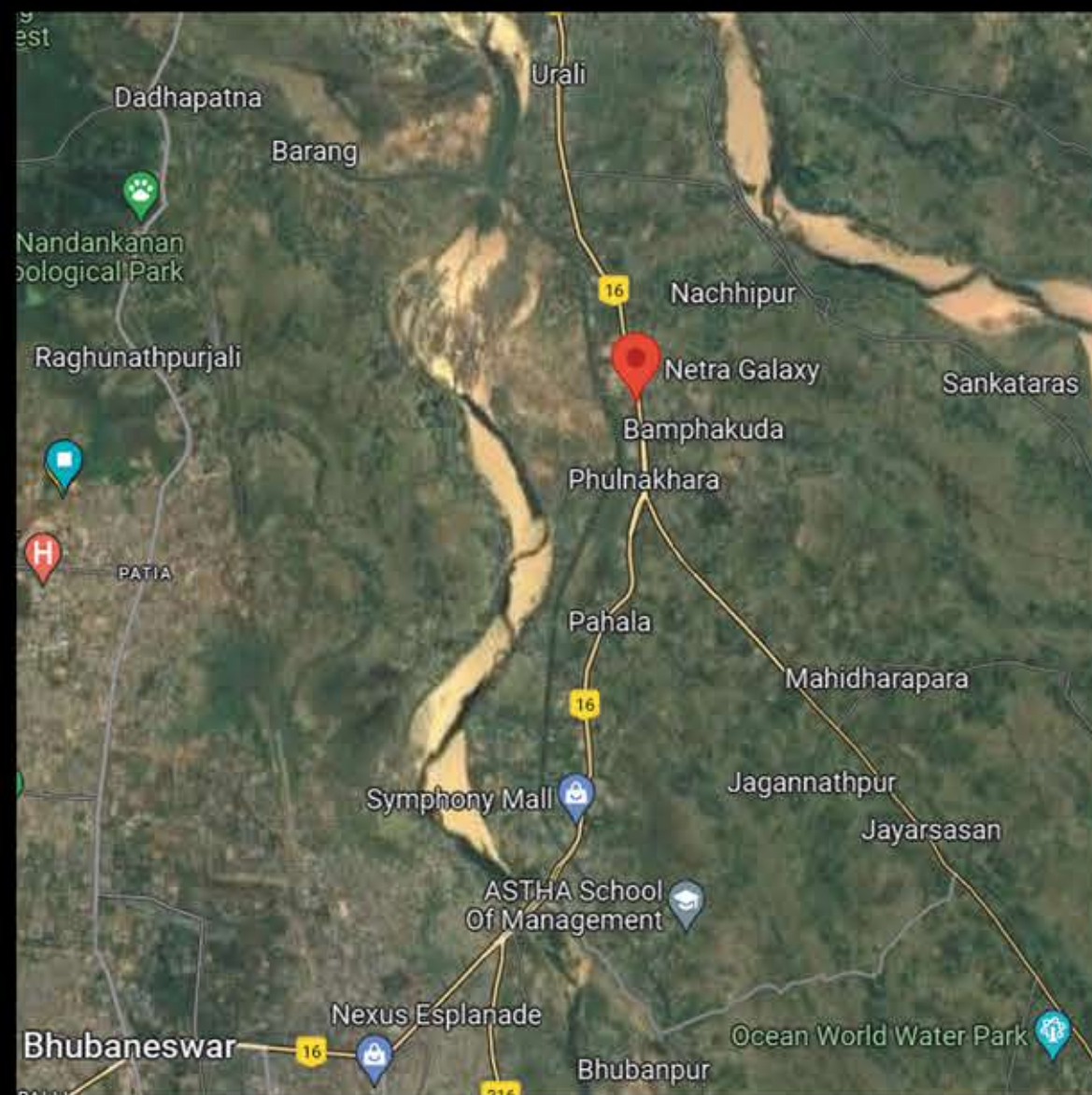
MOVIE THEATRE

\* Images provided only for pictorial representation



KITTY PARTY ROOM





## netra Galaxy

"Netra Galaxy" located at Nuahat adjacent to NH-16 & well connected to all the major landmarks having wide road access and very comfortable communication route.

- Close to Panda Cancer Hospital, Grand Bazzar, Decathlon and Reliance Petrol Pump.
- 2 mins drive from Phulnakhara Square.
- 6 to 8 mins drive from DPS Kalinga School and Mothers Public School.
- 5 to 6 mins drive from Pal Heights Mantra and Pahala Square.
- 6 to 8 mins drive from Symphony Mall.
- 8 to 10 mins drive from Rasulgarh Square, Esplanade Mall.
- 8 to 10 mins drive from Link Road, Cuttack.
- 20 to 25 mins drive from Bhubaneswar Railway Station.
- 30 to 35 mins drive from Biju Patnaik International Airport.

